

Suple Tree Sculpture Revealed at Cassia, 4011 Salzedo Street in Coral Gables

December 5, 2024



Cassia. Credit: Alta Developers.

As Art Basel Miami Beach unfolds, Alta Developers has revealed plans for a new art installation at Cassia, its latest development in Coral Gables. The Suple Tree Sculpture, part of the Reconstructed Natures series by Chilean studio gt2P (Great Things to People), is a tribute to the once-abundant grapefruit trees that helped shape Coral Gables' identity.

The installation draws inspiration from nature, blending industrialized cylindrical tubes with custom “suple” connectors to symbolize the coexistence of modernity and heritage. At night, internal LEDs illuminate the sculpture, offering functional lighting and a dynamic visual experience. Guillermo Parada, Creative Director of gt2P, explained, “Its tree form allows the sculpture to be interpreted in three scales: as a landmark that serves as a reference point, as a sculpture that influences its immediate surroundings,

and as an interior space that creates an experience by allowing visitors to pass beneath its branches.”



Credit: Alta Developers



Credit: Alta Developers



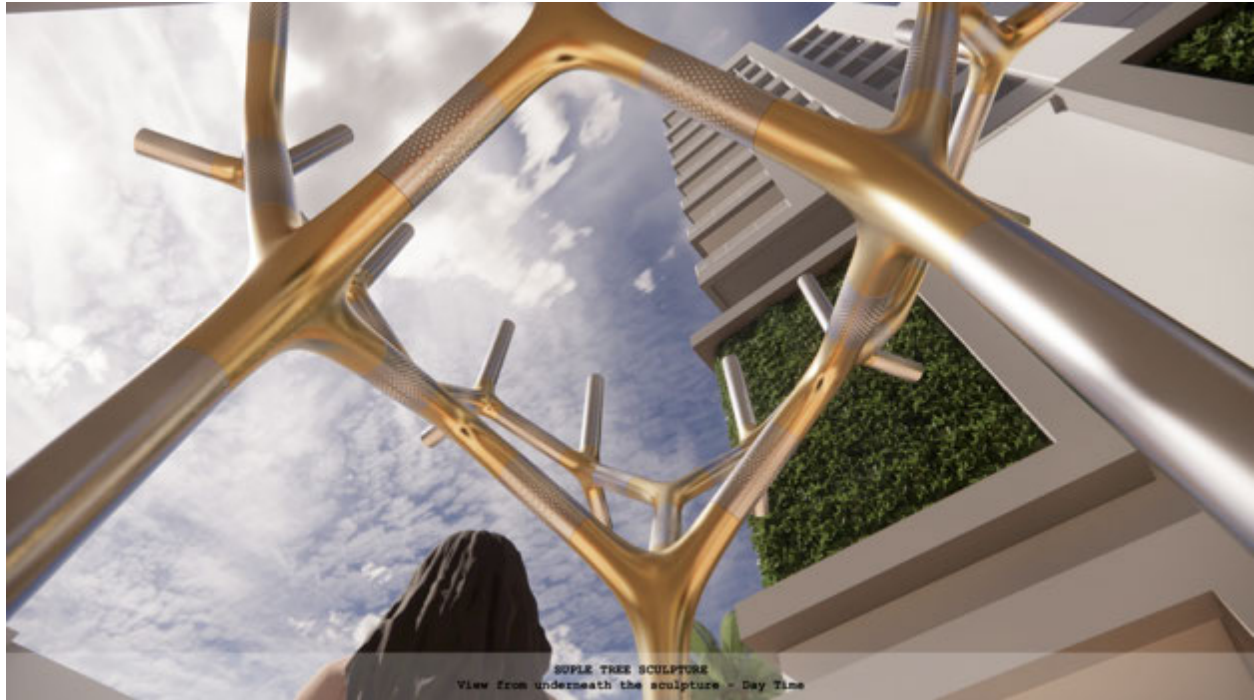
Credit: Alta Developers



Credit: Alta Developers

Located in the vibrant Merrick Park District at 4011 Salzedo Street, Cassia will rise as a nine-story development featuring 174 fully furnished residences. Units range from 662

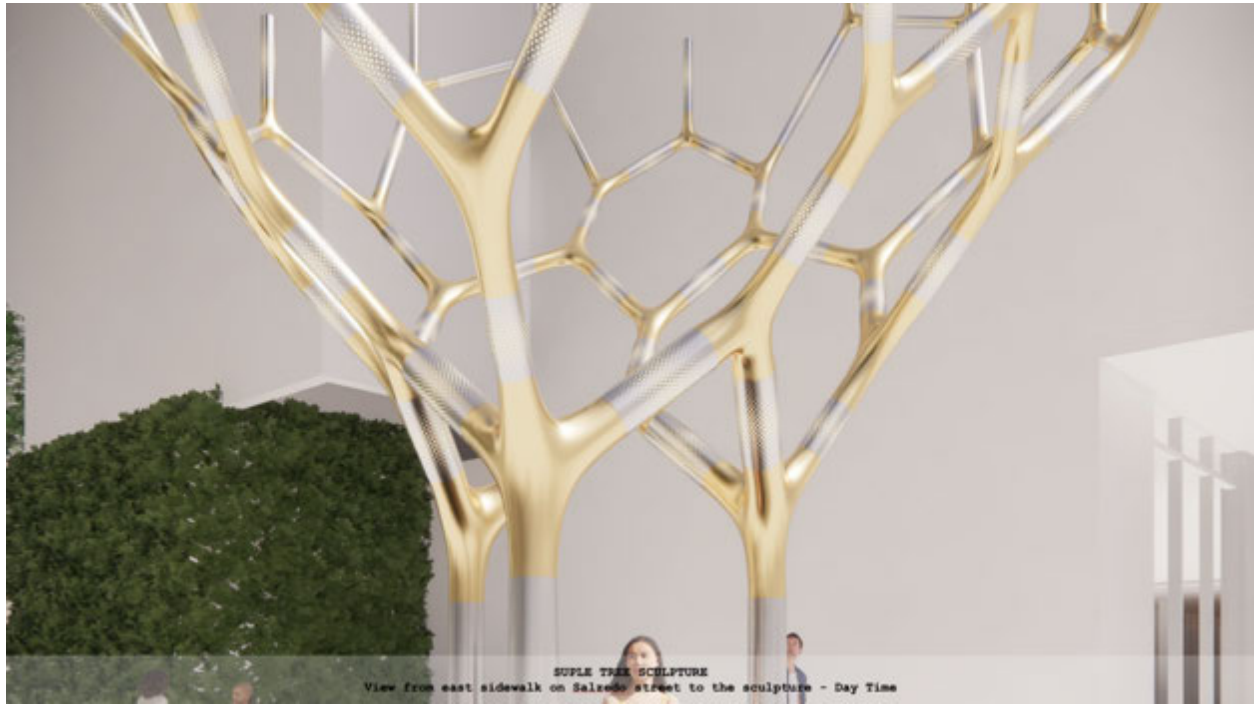
to 1,461 square feet, with pricing starting at \$700,000. Designed to accommodate a variety of lifestyles, Cassia offers one-, two-, and three-bedroom units with interiors by RH (Restoration Hardware). Flexible rental options are available, catering to frequent travelers and seasonal residents. Cervera Real Estate is exclusively managing sales.



Credit: Alta Developers



Credit: Alta Developers



Credit: Alta Developers.

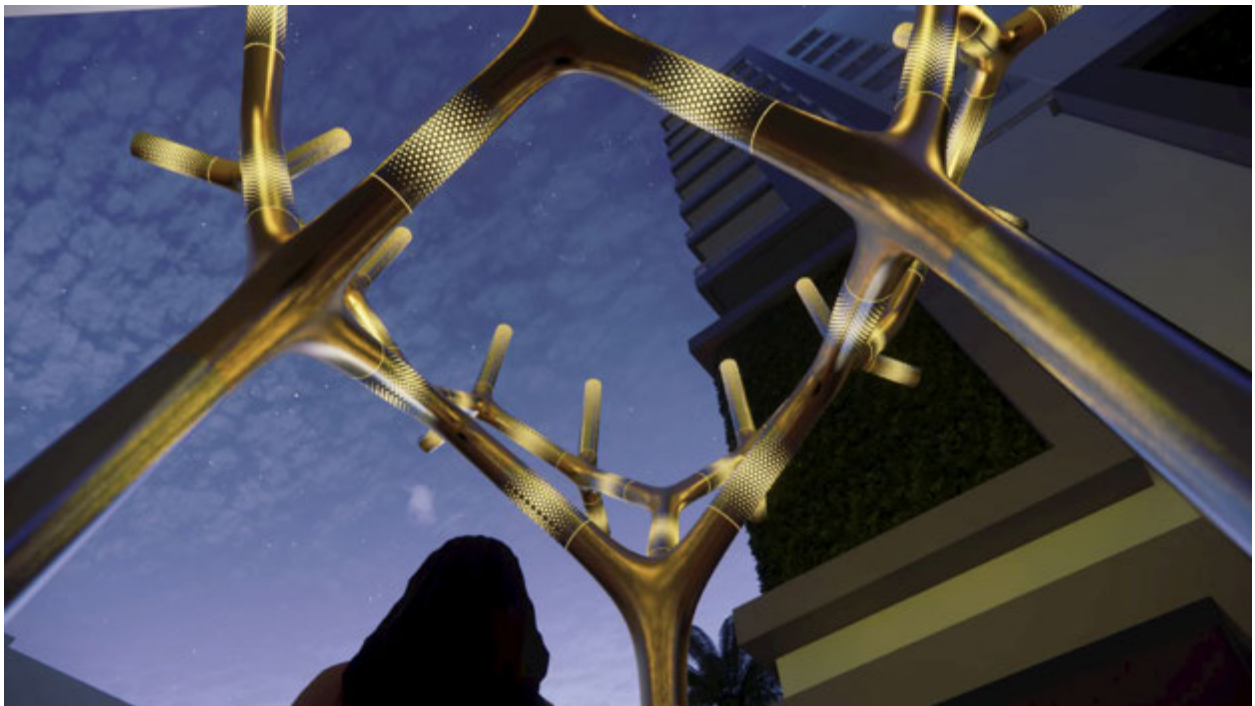
Among the amenities at Cassia are segmented lobbies, a business center, an executive lounge, a serene pool area with outdoor barbecues, fitness studios, and a state-of-the-art wellness center featuring a spa, treatment rooms, a steam room, a dry sauna, and an indoor pool. Residents will enjoy the proximity to the Shops at Merrick Park and a resort-like lifestyle in one of South Florida's most desirable neighborhoods.



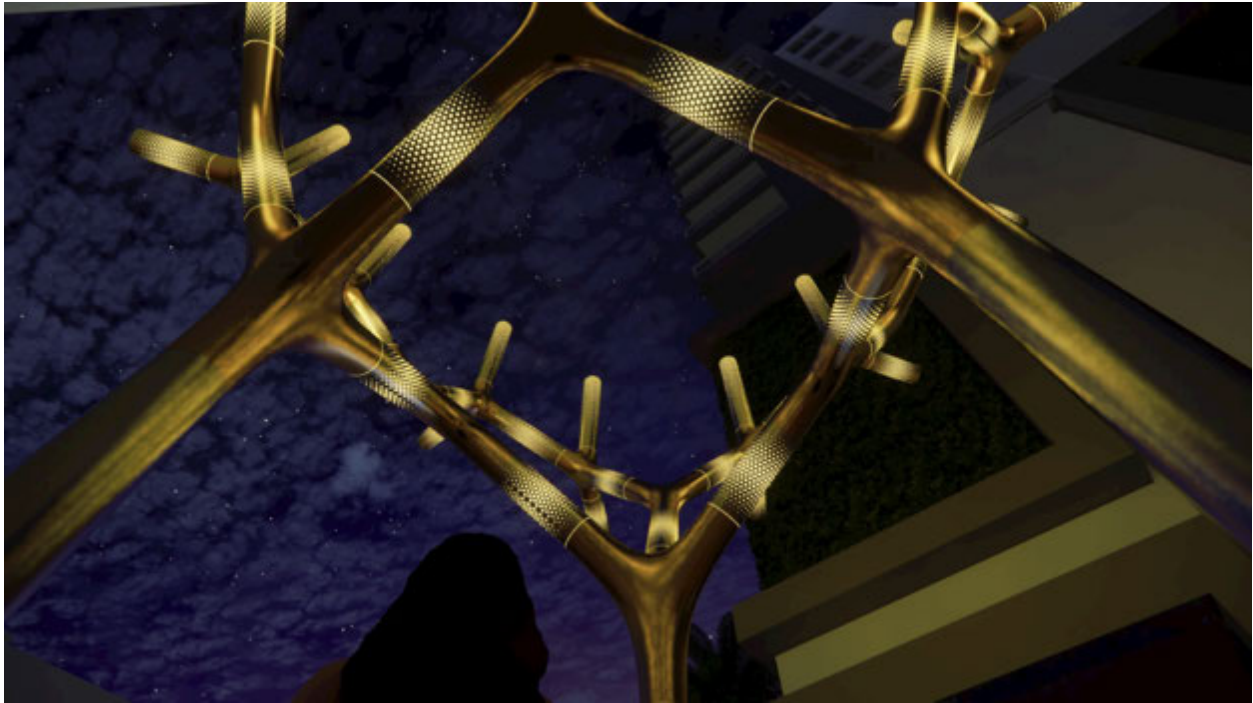
Credit: Alta Developers.



Credit: Alta Developers



Credit: Alta Developers.



Credit: Alta Developers.

“Cassia reflects the heritage and natural beauty of Coral Gables, paying homage to the city’s history as ‘Tree City USA,’ a designation it has held for over 34 years,” said Raimundo Onetto, CEO of Alta Developers. “Our hope is that as visitors encounter Suple Tree, they will feel the harmony of heritage and progress, witness the resilience of continuity and nature, and experience the unity that comes from embracing both Coral Gables’ past and its ever-bright future.”

Paredes Architects is leading the design of the building, with Design Philosophy overseeing interiors. The development integrates Coral Gables’ legacy of lush landscapes into every element of its design, aligning with the city’s vision of a garden-like urban experience. The Suple Tree Sculpture, in particular, will serve as both an artistic centerpiece and a meeting point for the community.

CULTIVATE
PR & SOCIAL MEDIA
by Sissy DeMARIA +
CAMPBELL + ASSOCIATES
MIAMI | NEW YORK

Florida YIMBY

Covers real estate, construction, and other topics related to development in Florida. YIMBY stands for "Yes In My Backyard". YIMBYs believe that building more housing, even at the higher end of the market, will improve affordability overall. They argue that this is because the process of building more housing will free up more affordable, lower-quality housing.

UVM: 24,567

<https://floridayimby.com/2024/12/suple-tree-sculpture-revealed-at-cassia-4011-salzedo-street-in-coral-gables.html>